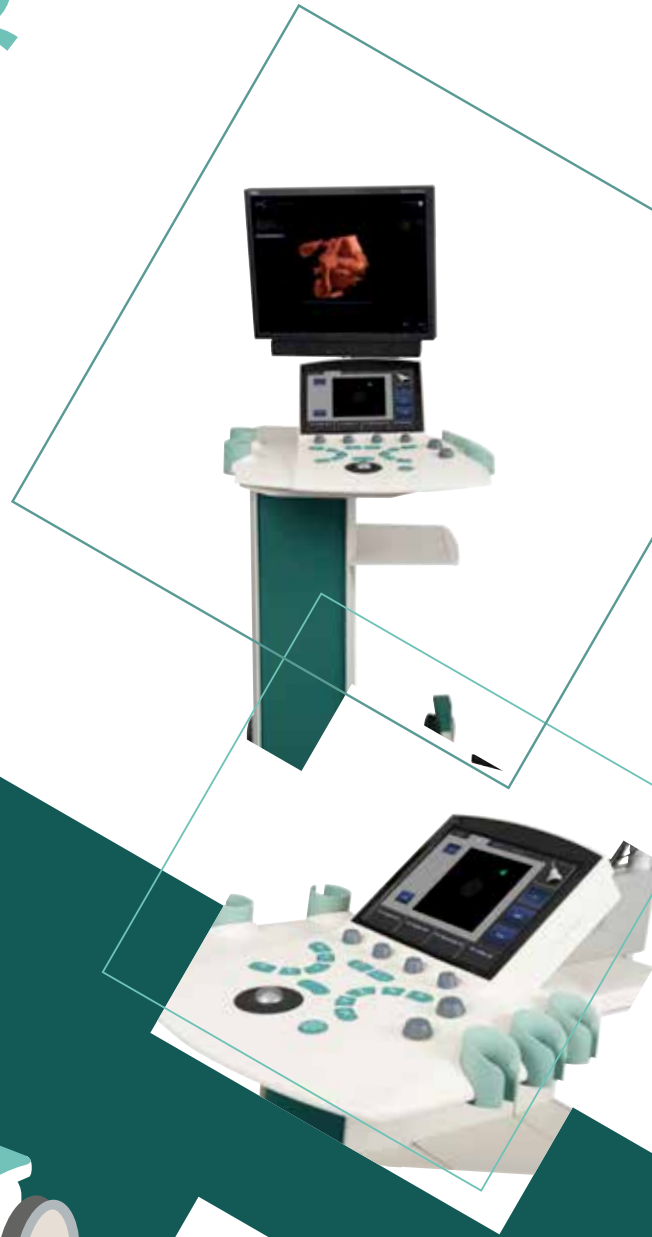


Orcheo

XQ





More than just a great scanner

After years of research and development, Sonoscaner is proud to introduce the new Orcheo XQ, the next generation of mobile ultrasound systems **for intensive users**.

Designed for the most demanding healthcare environments, the Orcheo XQ offers the unique combination of a small, lightweight mobile system that is yet powerful enough to give you the superior image quality you need.

Packed with the most sophisticated technologies available, Orcheo XQ takes your examinations to new levels of clinical value and productivity.

Unprecedented performance and versatility combined with a wide range of imaging modes make Orcheo XQ, the perfect match for your needs across a broad range of clinical applications.

Featuring a state of the art imaging system, Orcheo XQ allows you to perform faster exams with greater diagnostic accuracy and patient satisfaction.

Its user-friendly interface will boost your efficiency by helping you to focus on the patient, and not on the hardware.

Easily upgradable and serviced due to its open configuration, the Orcheo XQ will maintain its value for years to come and will allow you to meet the clinical needs of tomorrow.

Setting the pace in ultrasound technology development, Sonoscaner will continue to work with you toward shaping the future of diagnostic ultrasound imaging.

Orcheo XQ

GENERAL INFORMATION

- Display: High Resolution 21" LED, wide angle monitor
- Weight: 90kg
- Dimensions: 83cm X 57cm X 141cm
- Largest Touch Screen 12.1"
- Personalized Presets
- Fast Boot Up and Response Time
- Storage Capacity: 1To (images, cine loop)
- 4 USB 2.0 Ports
- Ethernet Port
- HDMI Port
- DVD

CLINICAL APPLICATIONS

Radiology, Obstetrics, Gynecology, Small-Parts, MSK, Anesthesia, Urology, Vascular, Abdominal, Pediatrics, Emergency, Cardiology etc...

IMAGING MODES

- B Mode (2D)
- Mode B/B
- M Mode
- Color M Mode
- Pulsed Wave Doppler (PW)
- **Continous Wave Doppler (CW)**
- Color Doppler (CFM)
- Color Power Doppler (PDI)
- **Directional Color Power Doppler (dir PDI)**
- Tissue Doppler (TDI)
- Duplex Mode
- Triplex Mode
- Tissue Harmonic Imaging (THI)
- Trapezoidal Imaging
- **Option Panoramic**
- **Option Elastography**
- **Option 3D/4D HD**

MAIN POST-PROCESSING FEATURES

- General Gain
- Color and Doppler Gain
- Baseline Adjustment
- Dynamic Range
- Real Time Adapting Smoothing (RTAS®) for Image Enhancement and Speckle Reduction
- Continuous Zoom X32 and Scroll to Adjust Field of View
- Measurements, Calculations, Automatic Report
- Texts and Annotations

(Available during live exams and on frozen images, recorded images and video clips for post-processing image optimization)

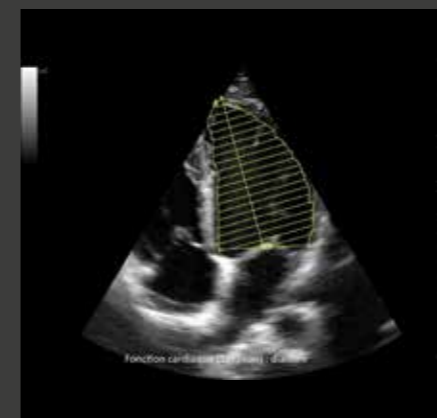


VERSATILITY AND SUPERIOR IMAGE QUALITY

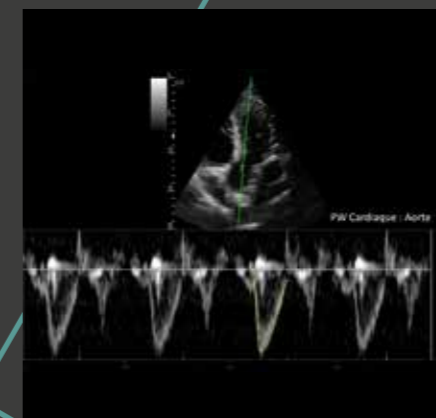
High-end Advanced features:

With Orcheo XQ you will benefit from the newest digital technology.

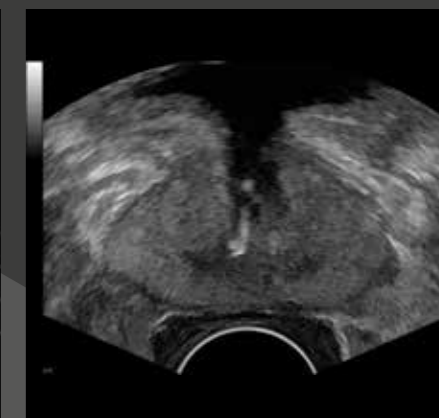
- Exclusive 3D/4D with light rendering and volume rotation
- Elastography for better risk assesment
- Panoramic live scanning to extend the field of view beyond limitation



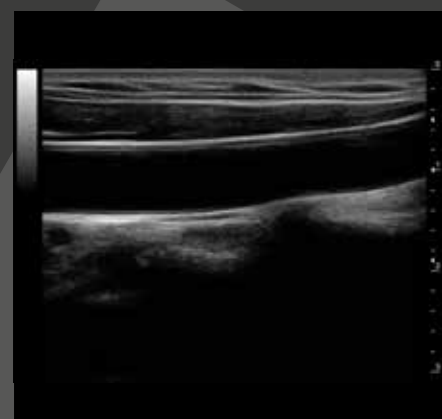
Cardio: Simpson function



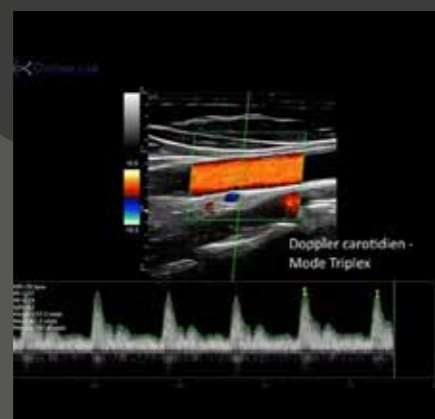
Aortic valve



Prostate calcification



Common Carotid Artery



Carotid Triplex



MSK



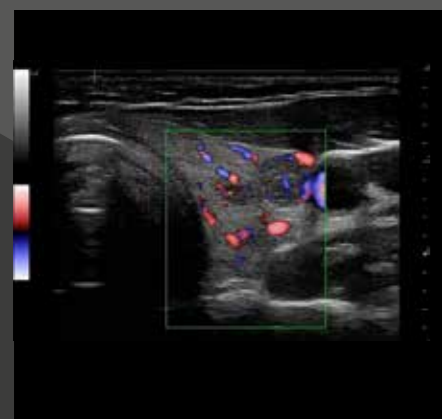
Kidney



Liver



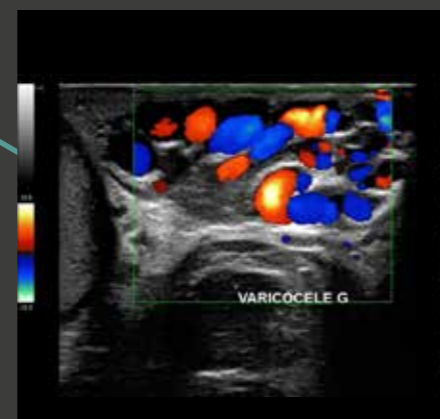
Obstetrics



Thyroid nodules

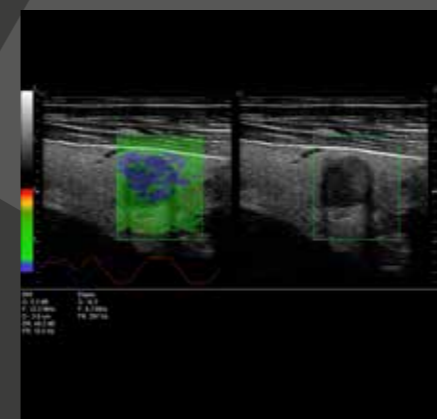


Small parts: testis



Varicocele

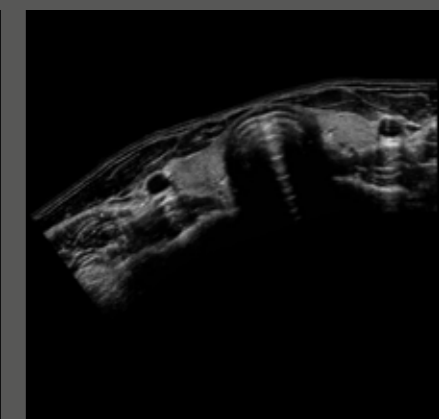
Advanced features



Elastography: thyroid nodule



4D HD rendering



Panoramic view of the thyroid lobes

Orcheo XQ Transducers

A complete set of lightweight broadband multifrequency transducers that deliver superior image quality and doppler sensitivity in a wide range of clinical settings. Simply attach the transducer to the Orcheo Lite, the system will then auto-recognize the type of transducer being used and will therefore select the appropriate presets.

	Volumic Convex Array 3D/4D	3-6 MHz	Obstetrics, Gynecology
	Convex Array	2-5 MHz	Abdominal, Obstetrics, Gynecology, Anesthesia, Vascular, Emergency
	Linear Array HD Very high frequency	8-18 MHz	Small parts, Vascular Anesthesia, MSK, Sport Medicine, Pediatrics
	Linear Array	5-10 MHz	Small Parts, Vascular, Anesthesia
	Endocavitary Array	5-8 MHz	Gynecology, Urology, Obstetrics
	Phased Array Probe	1,5-5 Mhz	Cardiology, Emergency, Transcranial, Pediatric
	Micro Convex Array	4-9 MHz	Pediatric, Urology
	Hockey Stick	8-18 Mhz	MSK, Anesthesia, Pediatric

Please contact your Sonoscanner representative for complete list of available transducers.

SONOSCANNER SUPPORT & SERVICE

By establishing a long term relationship with our local partners, we ensure that a consistent wide array of upscale services will be provided to you by our team of local certified field specialists.

- **On-Site Training:** Upon delivery, our local technicians will provide you with all the necessary training so that you quickly make the Orcheo Lite, a productive part of your clinical practice.
- **Customer Service:** Our local technical support team remains at your disposal to answer by email or by phone any of your inquiry.
- **Maintenance and Service:** In order to maintain the value of your Orcheo Lite for years to come, we provide regular operations of maintenance and service on the scanner.
- **Additional Training:** Our commitment to keep your ultrasound scanner a match with tomorrow's clinical needs may lead to important updates to be implemented on your Orcheo Lite. After major updates, you may request your local Sonoscanner representative to provide you with an additional training to be done either on the phone or directly on-site.

You can count on us to help you deliver the best medical care to your patients.



Our Product range

Orcheo LITE

U-Lite



A single, dedicated site for all your advanced reporting needs

weliteit.com

WELITEIT is opening the door to fully connected ultrasound systems. Access your scans wherever you are. Visualize, modify, print, share...





Founded in 2003, Sonoscanner is the result of decades of ultrasound imaging research, initially led by the Université de Paris.

When it was founded, Sonoscanner's main objective was to provide practitioners around the world the resources they need to perform early and reliable diagnoses. This commitment has not changed, and Sonoscanner continues to offer mobile ultrasound scanners which offer ever-greater performance, versatility and ease of use.

Located in the heart of the French capital, Sonoscanner combines all of the qualities of French technology and expertise. We aim to offer practitioners around the world products of unparalleled quality, so Sonoscanner systems are built using the most modern technology available. They are manufactured and tested according to the most stringent standards. Thanks to this dedication, the U-Lite has been awarded both the CE and FDA labels.

In terms of distribution, Sonoscanner has taken great care to select the best possible local partners. This enables us to provide practitioners with both an exceptional product and the impeccable service they need every day.

Currently, Sonoscanner ultrasound scanners are distributed around the world through our network of local distributors, with whom we have made a long-term commitment.

We aim to maintain our position as pioneer in HD compact ultrasound scanners by constantly working to innovate and fulfil the real needs of healthcare professionals.



SONOSCANNER
59 rue de la santé
75013 Paris - France
+33 9 54 97 15 57
contact@sonoscanner.com